



### **Utica-Rome Speedway 2023 Three Bastards Brewing Modified Specifications**

The 2023 Three Bastards Brewing Modified division at Utica-Rome Speedway will work off the general guidelines of the Bob Hilbert Sportswear Short Track Super Series (STSS) Fueled By Sunoco. Visit [www.shorttracksuperseries.com](http://www.shorttracksuperseries.com) under "Series Info" to view complete regulations.

#### **Engines:**

Big- and small-block engine combinations are permitted at Utica-Rome Speedway. Steel-block only (exceptions can be made for approved W-16, LS and spec combinations). No small-block engine may exceed 450 cubic inches. No big-block engine may exceed 477 cubic inches. Must be (single) carbureted; no fuel injection.

- Big- and Small-Block engines: 2,400 lbs.
- Wegner LS 427 Weekend Warrior Spec (steel-block): 2,350 lbs.
- CT 525: 2,300 lbs.
- PA/NJ/DIRTcar Spec Small-Block – open carburetor, no rev limiter (gasoline): 2,275 lbs.
- W-16: 2,250 lbs.

*All weights are track scale pounds, with driver, post-race. Weights are subject to change by Utica-Rome Speedway officials to maintain competitive balance.*

#### **Tires:**

*Right-Rear: American Racer SD 48 or harder*

*Left-Rear: American Racer SD 44 or harder*

*Right-Front: American Racer SD 38 or harder*

*Left-Front: Any American Racer Modified tire*

#### **Bodies:**

Traditional windows only. No sail panels for weekly racing.

Door heights are as follows: maximum height of 41 inches on the left side and 40 inches on the right when measured 60 inches forward from the centerline of the rear axle.

#### ***Left-Side Measurement Points:***

16 inches forward from centerline of rear axle: 45 inches maximum, 37 inches minimum

60 inches forward from centerline of rear axle: 41 inches maximum, 36 inches minimum

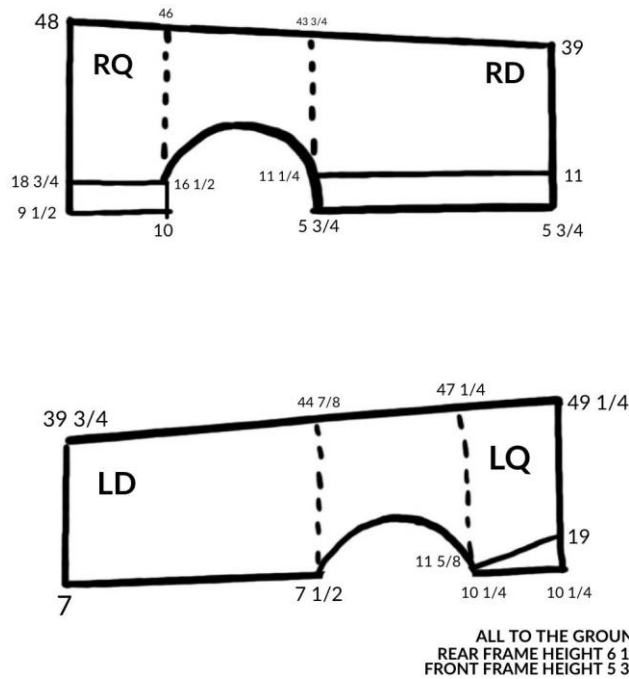
#### ***Right-Side Measurement Points:***

16 inches forward from centerline of rear axle: 44 inches maximum, 36 inches minimum

60 inches forward from centerline of rear axle: 40 inches maximum, 35 inches minimum

There cannot be more than a one-inch difference from left door to right door in split when measured from the ground.

Please reference the diagram below for STSS door dimensions:



The maximum combined length of door and quarter together, front to back, is as follows:

- *Left Side:* 11 feet, 4.5 inches on the top of the combined door/quarter; 11 feet, 5 inches on the bottom of the combined door/quarter
- *Right Side:* 11 feet, 3 inches on both the top and bottom of the combined door/quarter

Rear spoiler rule maximum height: 50 inches – must be even from left to right. Minimum ground clearance of 6 inches in door skirting and 8-inch minimum for rear quarter-panel skirting.

Maximum body width, when measured at any point along the body line from front-to-back will be a maximum of 68 inches and minimum of 64 inches.

Aluminum surrounding fuel cell is optional.

*All other measurements are to mirror the standard for Northeast dirt Modified racing. **Utica-Rome Speedway officials have final decision on all discrepancies.***

#### **Fuel:**

Gasoline only. Sunoco Race Fuels (110, 112 or HCR) are the preferred fuels of Fonda Speedway.