



Utica-Rome Speedway 2022 Limited Sportsman Specifications

The Limited Sportsman division at Utica-Rome Speedway will follow the 2022 DIRTcar Sportsman rule book with the following exceptions:

- 1) **Engines:** DIRTcar seal not required – open to all unaltered/stock GM Crate 602 engines
- 2) **Weight** – minimum 2,400 lbs., taken post-race, with driver, track scale pounds
- 3) **Fuel** – Sunoco Race Fuels 110, Sunoco 98 or Can-Am Crate Fuel is the preferred fuel of the speedway. *No oxygenated fuel.*
- 4) **Tires** –
Right-Rear: American Racer SD 48 or 50 compounds ONLY
Left-Rear: American Racer SD 44 or 48 compounds ONLY
Right-Front: Any American Racer Modified tire
Left-Front: Any American Racer Modified tire
- 5) **Fire Suppression Bottle** – ***Not mandatory at Utica-Rome Speedway*** – no weight break for teams utilizing this option.
- 6) Rear spoiler is optional. Maximum rear deck height (with spoiler) measured from the ground is 50 inches and must be even from left to right.
- 7) **Doors:** maximum height of 41 inches on the left side and 40 inches on the right when measured 60 inches forward from the centerline of the rear axle.

Left-Side Measurement Points:

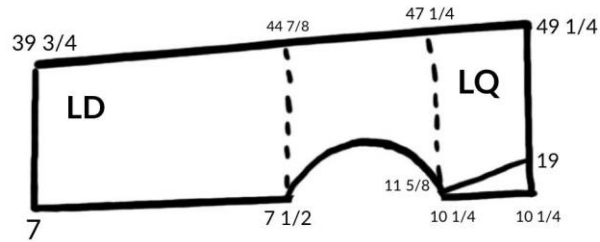
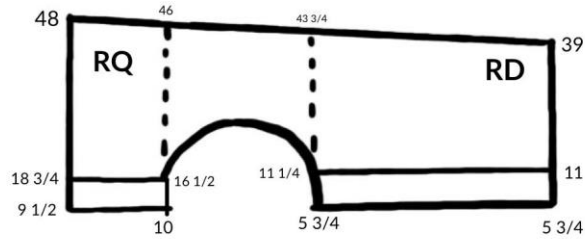
16 inches forward from centerline of rear axle: 45 inches maximum, 37 inches minimum
60 inches forward from centerline of rear axle: 41 inches maximum, 36 inches minimum

Right-Side Measurement Points:

16 inches forward from centerline of rear axle: 44 inches maximum, 36 inches minimum
60 inches forward from centerline of rear axle: 40 inches maximum, 35 inches minimum

There cannot be more than a one-inch difference from left door to right door in split when measured from the ground.

Please reference the diagram below for door dimensions:



ALL TO THE GROUND
 REAR FRAME HEIGHT 6 1/2
 FRONT FRAME HEIGHT 5 3/4

The maximum combined length of door and quarter together, front to back, is as follows:

- *Left Side:* 11 feet, 4.5 inches on the top of the combined door/quarter; 11 feet, 5 inches on the bottom of the combined door/quarter
 - *Right Side:* 11 feet, three inches on both the top and bottom of the combined door/quarter
- 8) Aluminum surrounding fuel cell is optional at Utica-Rome Speedway.
 - 9) One spring rubber permitted on each corner of the car.

Eligibility Requirements:

- 1) Drivers who have won a Limited Sportsman championship are not eligible to compete in this division.
- 2) Drivers who have raced full-time in a regular Sportsman division during the past three (3) years may not be eligible to compete in this division (*track discretion applies*).